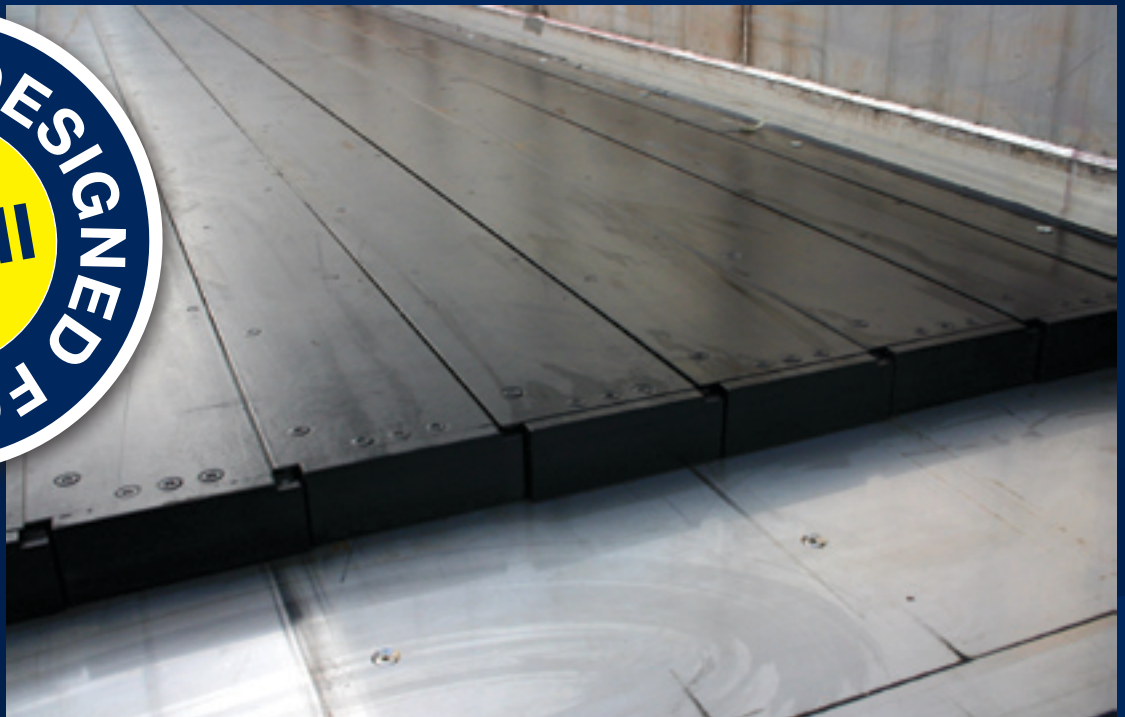




# [www.krakertrailers.eu](http://www.krakertrailers.eu)

*MASTERS IN MOVING FLOOR TRAILERS*

## CF-HI-(ECO) With Hardox-floor



### Highlights:

- Sealing pressure by overlapping steel (no plastic seal)
- Smooth surface (also suitable for pallets, bales, etc.)
- Easy to clean (no residual material)
- Reinforced inner walls through aluminum, Hardox or steel wear plates
- Interchangeable with standard profiles Cargo Floor
- Very high wear resistance
- Available in 400 or S355 Hardox
- High impact resistance
- Can be run over with a loaded forklift
- High temperature resistance
- Easy to assemble
- Semi-Leak implementation (optional)

**Kraker Trailers Axel BV**  
Vaartwijk 7  
4571 SV Axel  
The Netherlands

Postbus 200  
4570 AE Axel  
The Netherlands

Tel: + 31 (0)115 56 17 40  
Fax: + 31 (0)115 56 46 61

[info@krakertrailers.eu](mailto:info@krakertrailers.eu)  
[www.krakertrailers.eu](http://www.krakertrailers.eu)



# www.krakertrailers.eu

*MASTERS IN MOVING FLOOR TRAILERS*

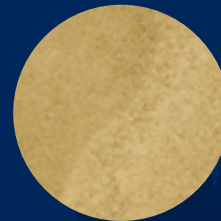
## “Transport for all heavy construction materials and waste”

### Hardox Waste Profiel SLP 112



#### Among other suitable for:

- Sand
- Grind
- Split
- Glass
- Snails
- Steel Scrap small groups
- Aluminum Scrap small groups
- Scattered debris small groups
- Stone
- Logs
- Unsorted debris
- Logs
- Rock Blocks
- Engines



**Kraker Trailers Axel BV**  
Vaartwijk 7  
4571 SV Axel  
The Netherlands

Postbus 200  
4570 AE Axel  
The Netherlands

Tel: + 31 (0)115 56 17 40  
Fax: + 31 (0)115 56 46 61

info@krakertrailers.eu  
www.krakertrailers.eu